

EMPLOYERS ENGAGED IN CHESS GAME OF HIRING TACTICS

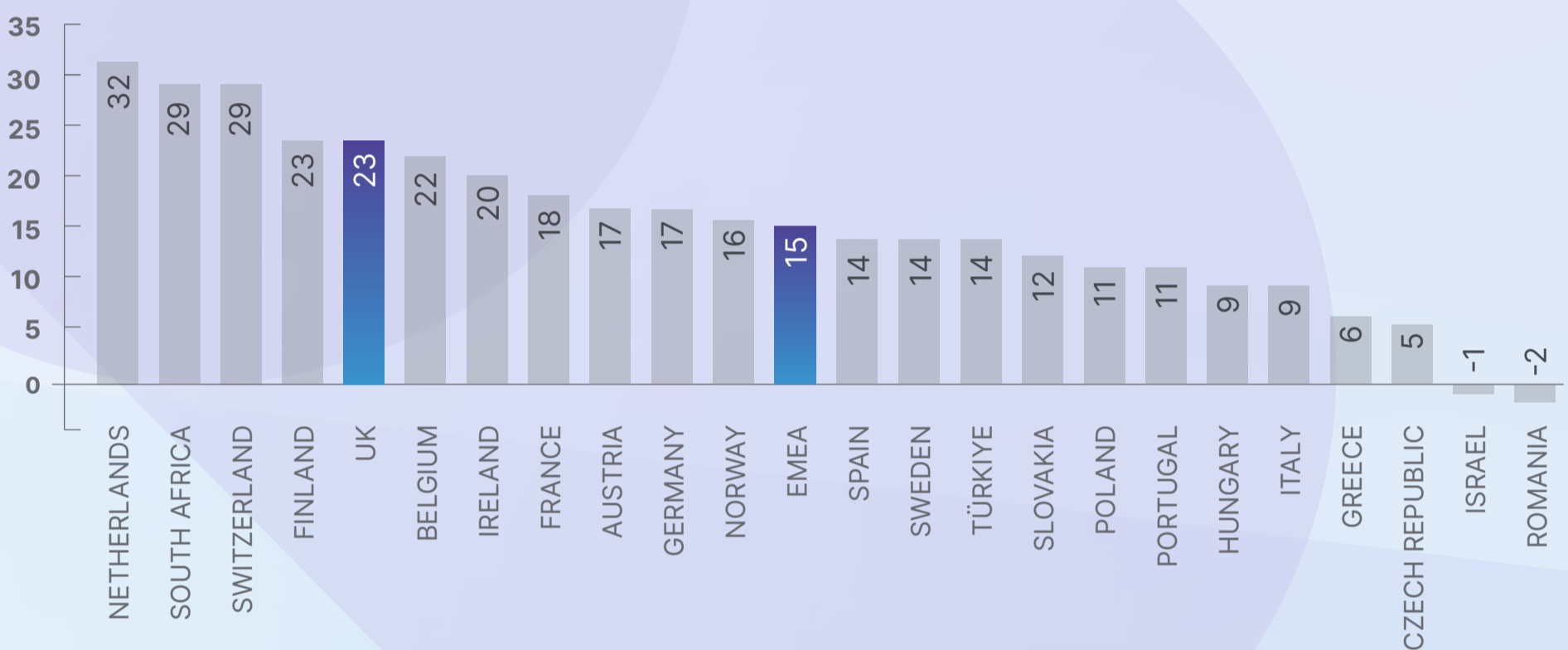
ManpowerGroup
Employment
Outlook Survey

AMIDST CONTINUED ECONOMIC FLUX

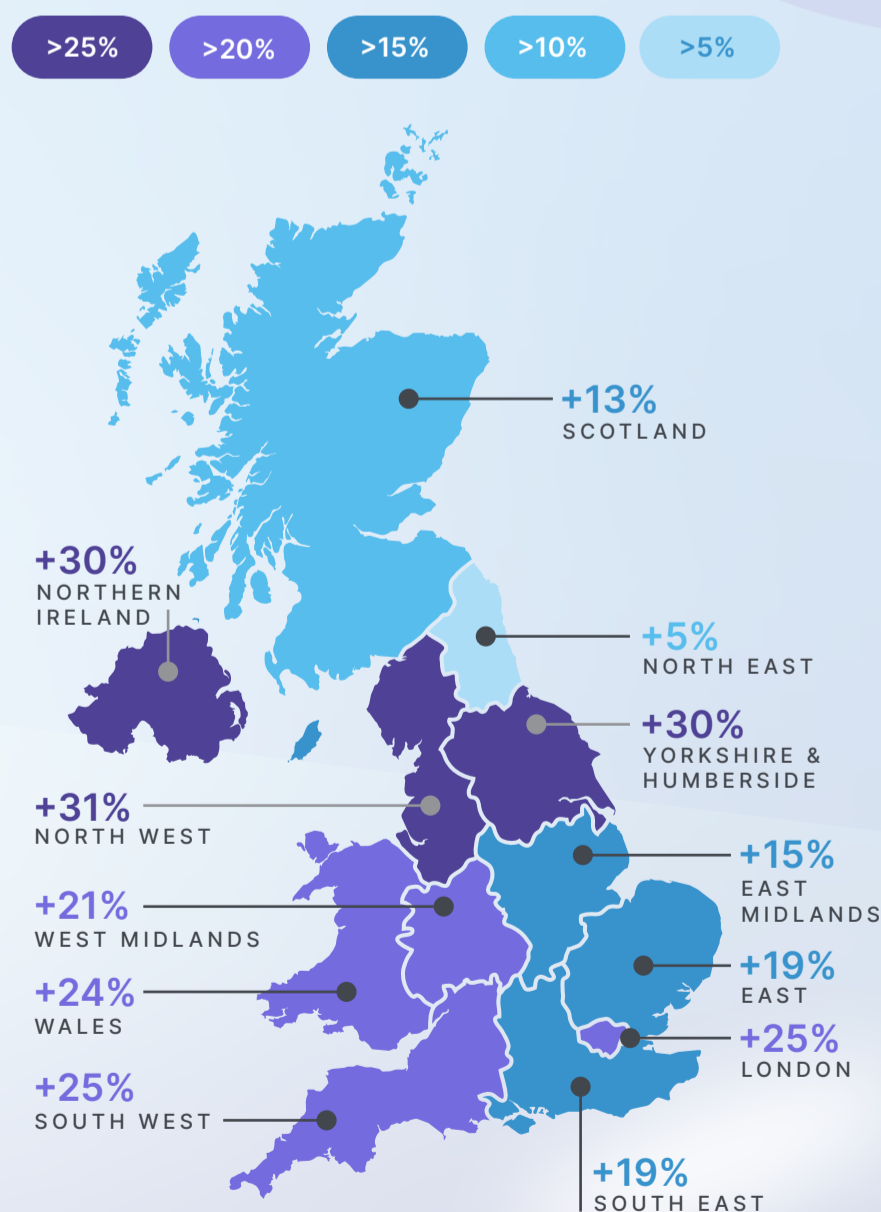
HIRING CONFIDENCE COOLS TO +23%



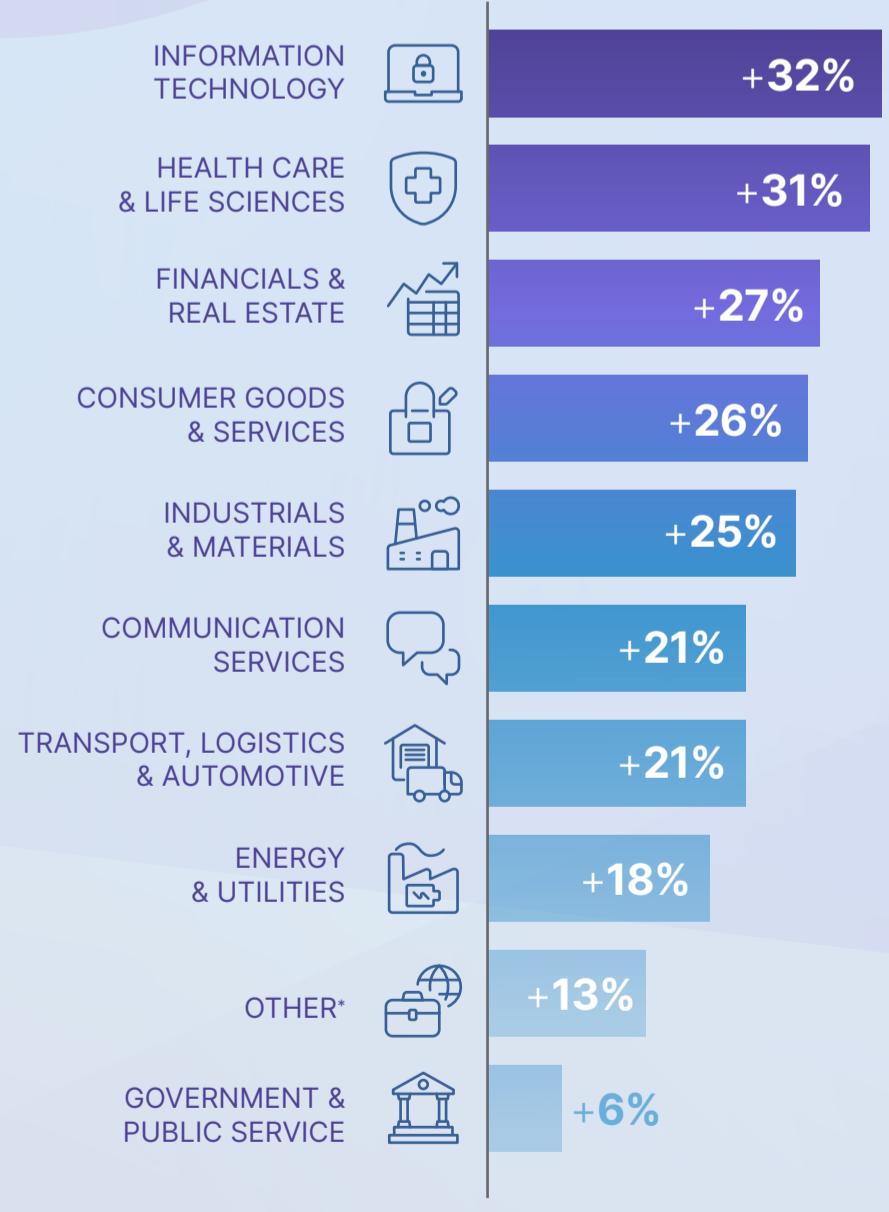
Q2 2024 NET EMPLOYMENT OUTLOOK: EMEA



UK EMPLOYMENT OUTLOOK: ALL REGIONS REMAIN POSITIVE



UK EMPLOYMENT OUTLOOK: ALL SECTORS REMAIN POSITIVE



*Includes: Not for Profit/NGO/Charity/Religious organisation; Other Industry; Other Transport, Logistics and Automobiles Sub-Industry; Educational Institutions; Agriculture and Fishing.

For more information about the ManpowerGroup Employment Outlook Survey, please visit manpowergroup.co.uk/meos

What do the percentages mean?

The % of employers anticipating an increase in headcount
 - the % of employers expecting to decrease in headcount
 = Outlook Percentage

Seasonally adjusted – Seasonal adjustments are applied to research data to remove employment fluctuations that normally occur at the same time each year, such as the end of a school term or a change in season.