

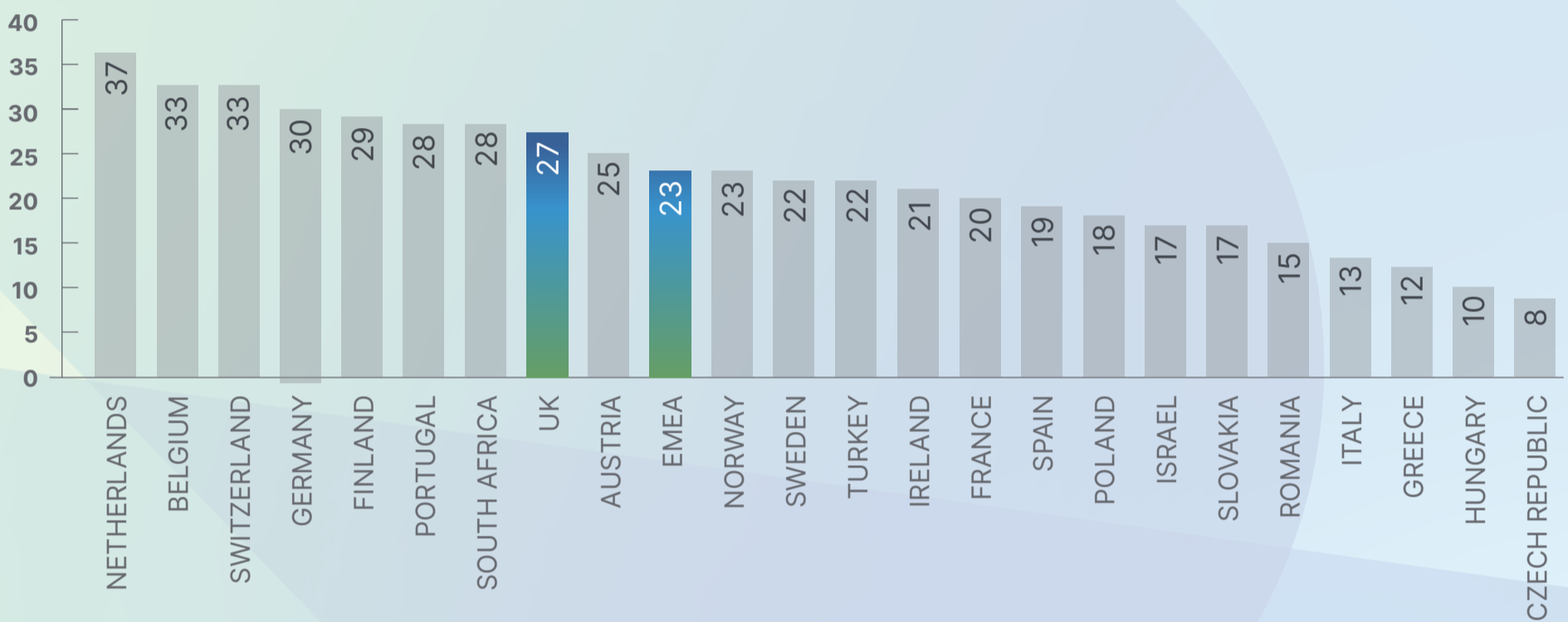
# UK EMPLOYERS POSITIVE ABOUT HIRING INTENTIONS

## HARD TO FIND SKILLS DRIVE UK HIRING

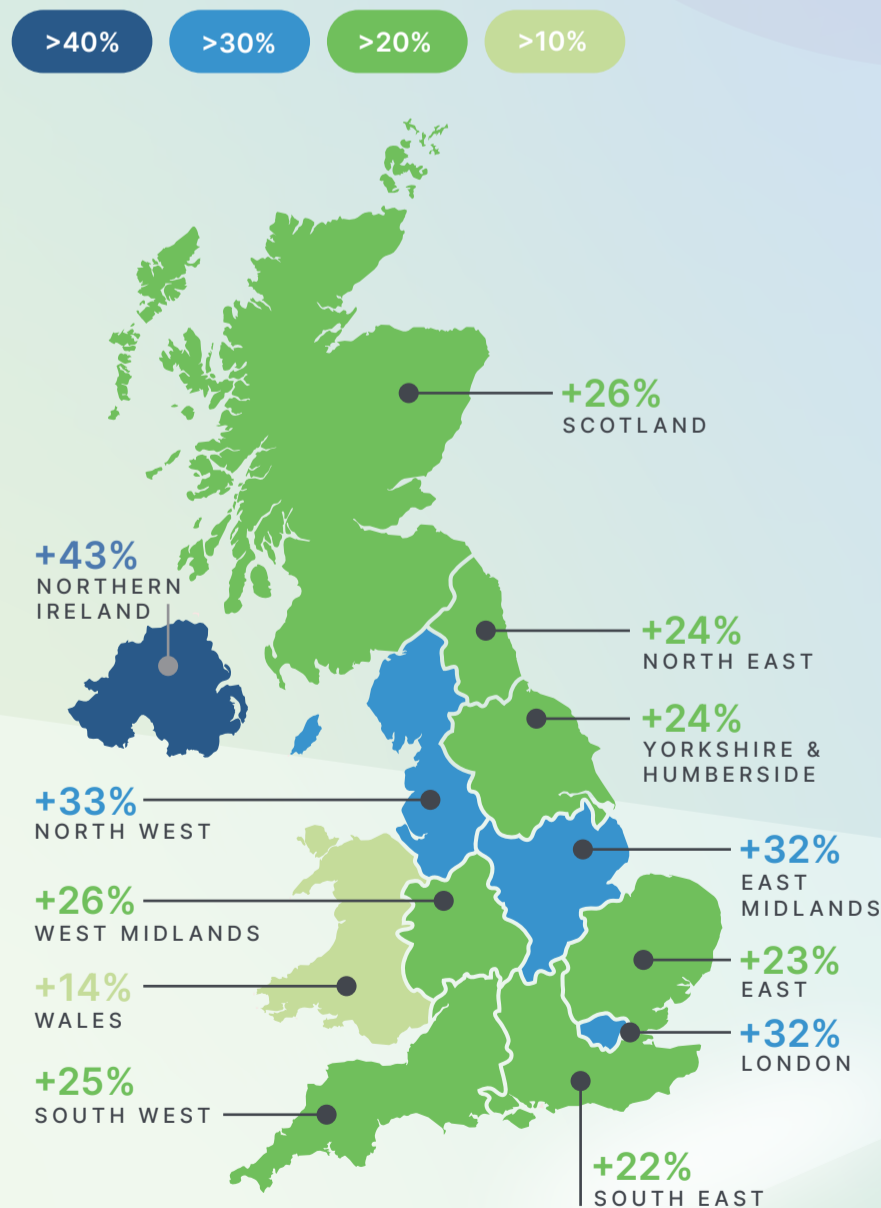
### HIRING CONFIDENCE STEADY AT +27%



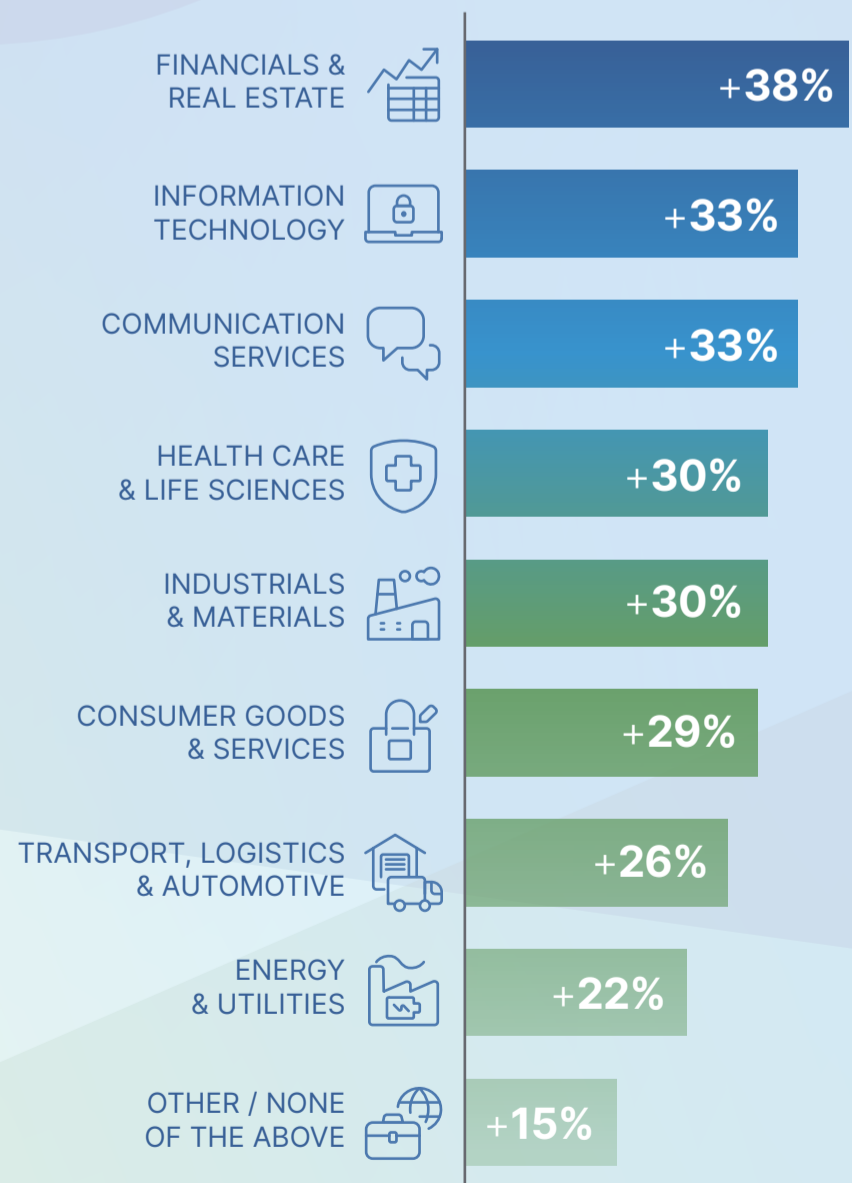
### Q1 2024 NET EMPLOYMENT OUTLOOK: EMEA



### UK EMPLOYMENT OUTLOOK: ALL REGIONS REMAIN POSITIVE



### UK EMPLOYMENT OUTLOOK: ALL SECTORS REMAIN POSITIVE



For more information about the ManpowerGroup Employment Outlook Survey, please visit [manpowergroup.co.uk/meos](https://manpowergroup.co.uk/meos)

#### What do the percentages mean?

The % of employers anticipating an increase in headcount  
 - the % of employers expecting to decrease in headcount  
 = Outlook Percentage

Seasonally adjusted – Seasonal adjustments are applied to research data to remove employment fluctuations that normally occur at the same time each year, such as the end of a school term or a change in season.