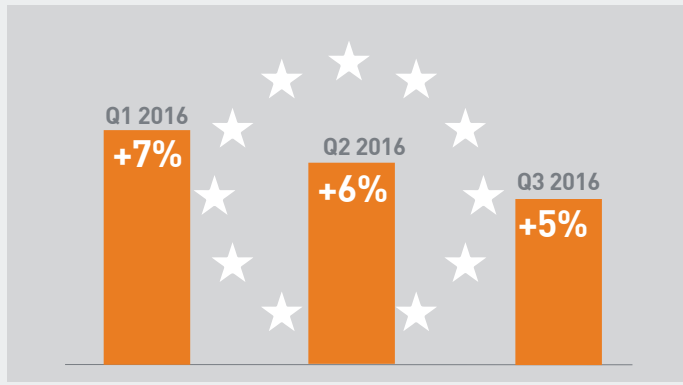


# WHERE THE JOBS ARE

## MANPOWER EMPLOYMENT OUTLOOK SURVEY

THIRD QUARTER 2016

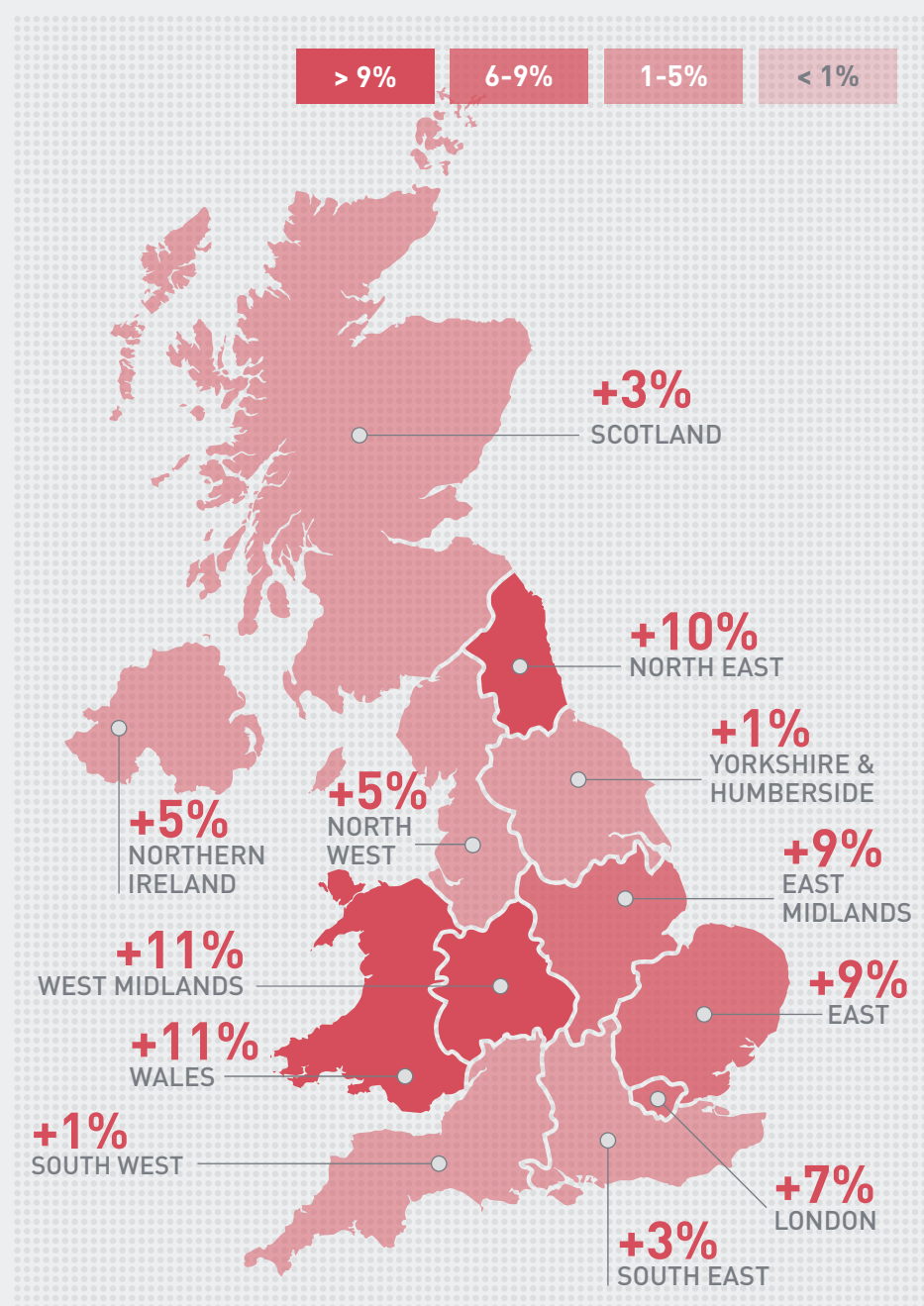


**BREXIT UNCERTAINTY SEES NATIONAL AVERAGE FALL FOR SECOND SUCCESSIVE QUARTER**

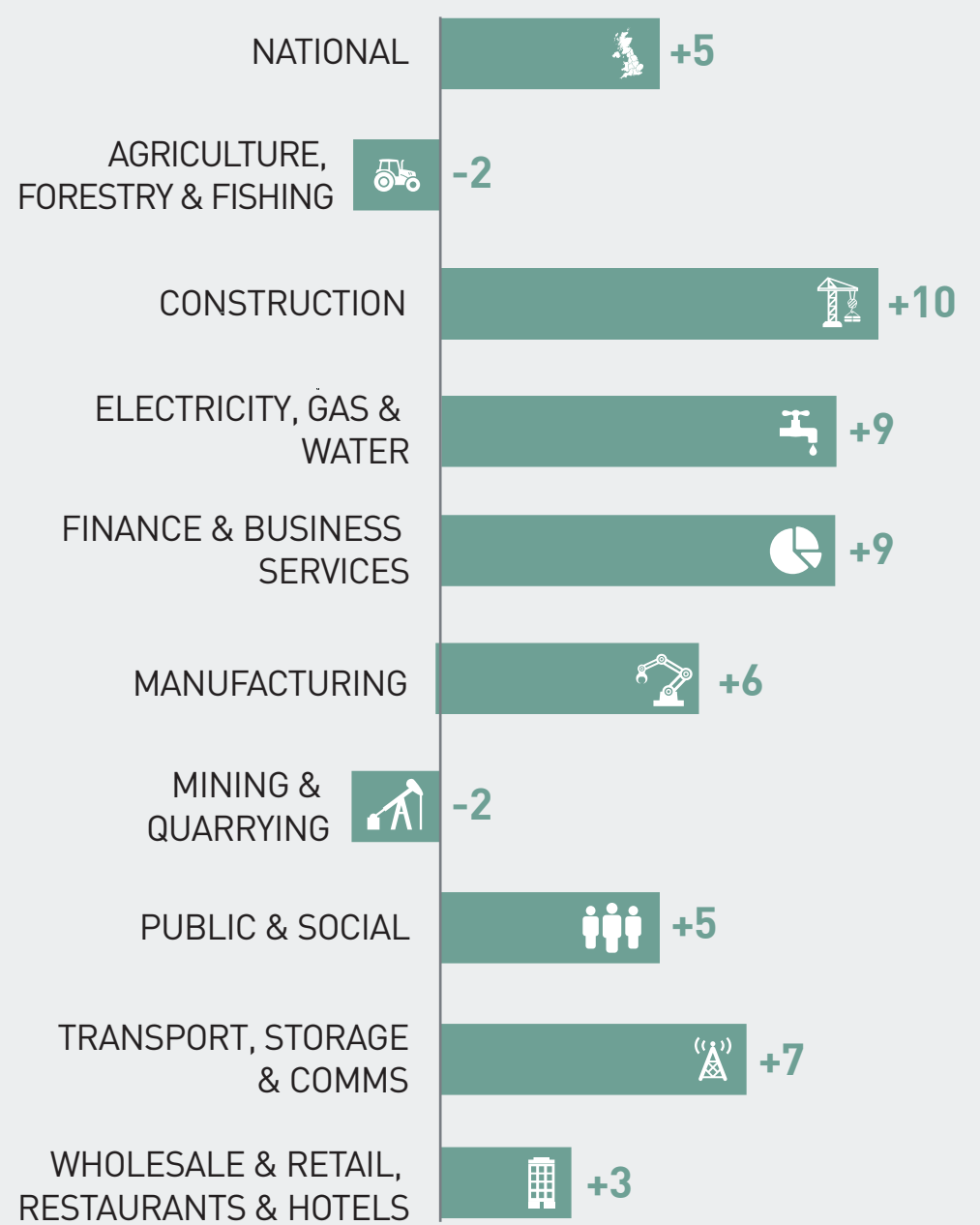


**CONSTRUCTION MOST OPTIMISTIC SECTOR FOR THE FIRST TIME SINCE Q4 2005**

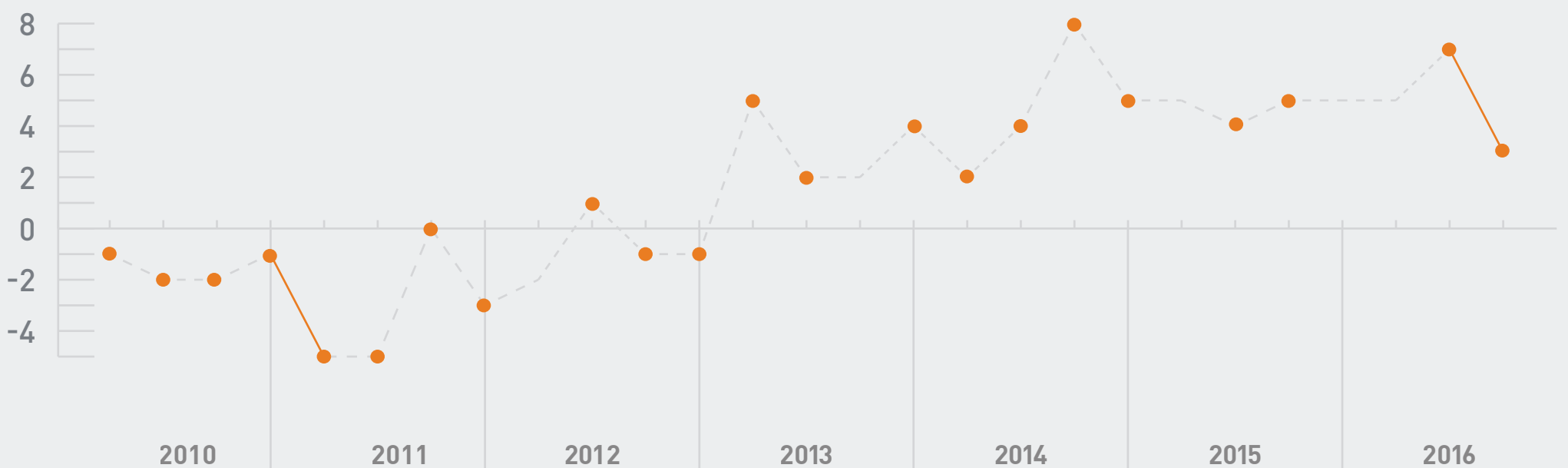
### BEST AND WORST OUTLOOK FOR JOBS BY REGION IN Q3 2016



### BEST AND WORST OUTLOOK FOR JOBS BY SECTOR IN Q3 2016



### BIGGEST FALL IN RETAIL SINCE 2010 FOLLOWING INTRODUCTION OF NLW



#### What do the percentages mean?

The % of employers anticipating an increase in headcount – the % of employers expecting to decrease in headcount

= Outlook Percentage

Seasonally adjusted – Seasonal adjustments are applied to research data to remove employment fluctuations that normally occur at the same time each year, such as the end of a school term or a change in season.

For more information about the Manpower Employment Outlook Survey, please visit [manpower.co.uk/meos](http://manpower.co.uk/meos)



ManpowerGroup